

REPORT FROM AUDIT AND INVESTIGATIONS

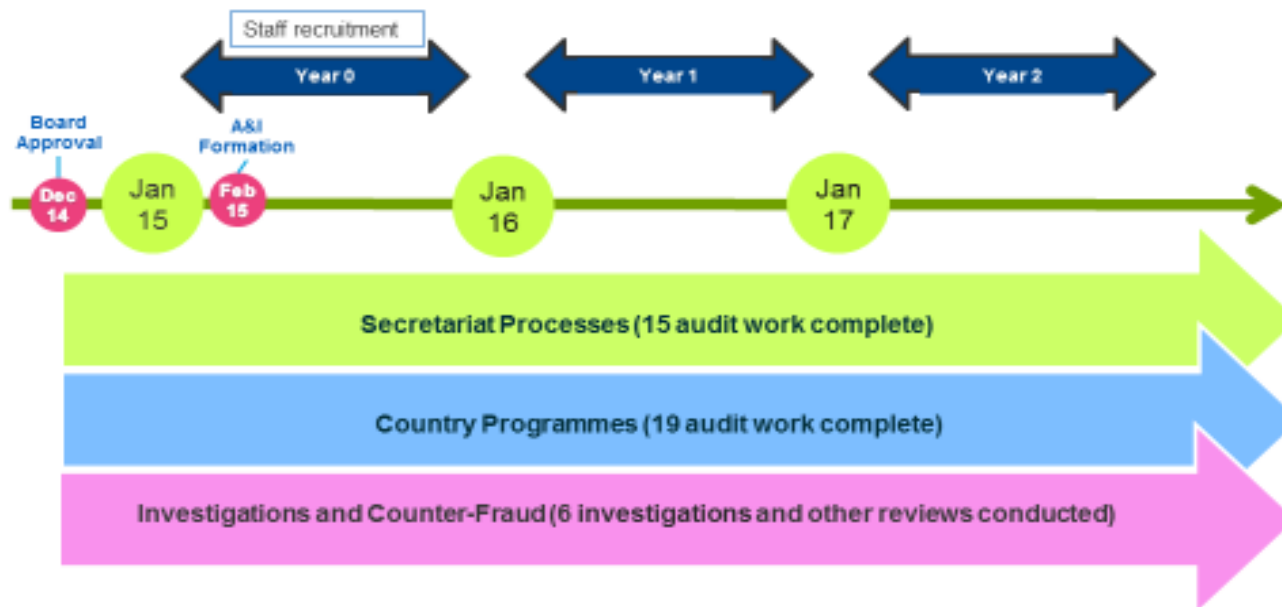
BOARD MEETING

Simon Lamb

14-15 June 2017, Geneva



Audit and Investigations Evolution



Board meeting
14-15 June 2017

Gavi's definition of misuse

Misuse if non-compliance with any of the following:

- Resources received from Gavi - used for the sole purpose of carrying out the programme activities
- Funds/vaccines received – no misuse or waste of, or corrupt, illegal or fraudulent activities involving funds and vaccines/supplies
- On use of funds – all expenses are properly evidenced with supporting documentation sufficient to verify such expenses

Country Reimbursement Schedule

COUNTRY REIMBURSEMENT SCHEDULE, CUMULATIVE					
As at 9 June 2017					
COUNTRY	REIMBURSEMENT	TOTAL REPAID	TOTAL OUTSTANDING	TOTAL DUE	TOTAL NOT YET DUE
	<----- US\$ million ----->				
Total fully reimbursed against commitments	12.23	12.23	0		
Total not yet fully reimbursed	7.49	0	7.49	0.08	7.41
Total not yet agreed to be reimbursed	0.4	0	0.4	0	0.4
Total overall reimbursement status	20.12	12.23	7.89	0.08	7.81
Recovery rate on amounts due:				99 %	
Recovery rate on total agreed reimbursement:				62 %	
Recovery rate on identified misuse:				61 %	

Recurrent Themes from Programme Audits

THEMES ARISING		OBSERVATION FREQUENCY
1.	Budget management –setting, tracking and conformity	47%
2.	Poor leadership, low capacity	47%
3.	Poor follow-through on identified weaknesses	53%
4.	Oversight is inconsistent and incomplete	53%
5.	Non-compliance with national rules	68%
6.	Campaign funds use not fully effective	47%
7.	Weak traceability of use of Gavi funds	58%
8.	Stock management not fully effective	68%

This table shows the frequency with which issues of process have been identified in the last two years.

Systems of financial management are often challenged ...



Board meeting
14-15 June 2017

Reach every child

Thank you !!

